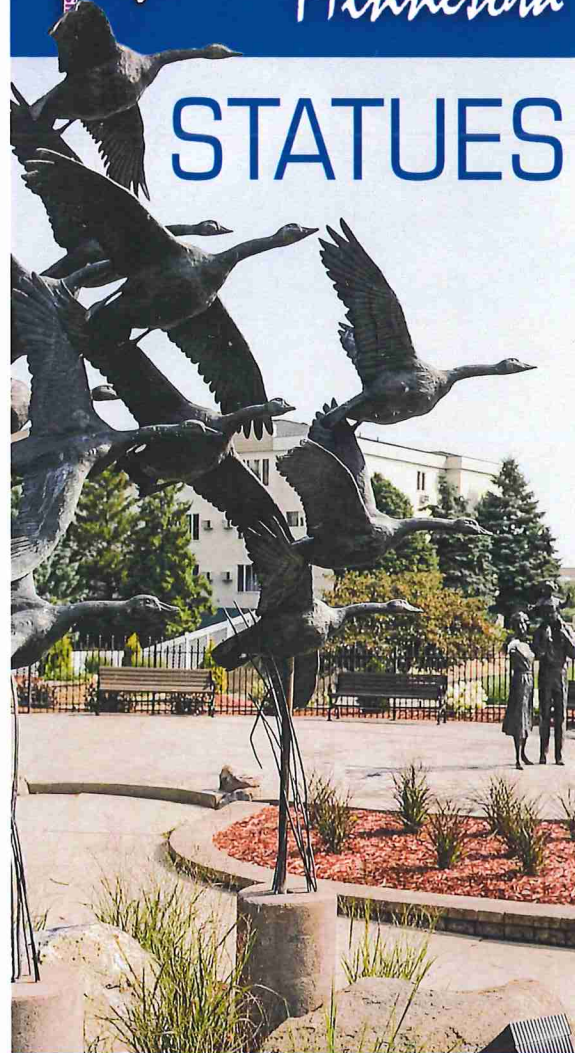




Discover Austin Minnesota

STATUES



301 North Main Street, Suite 101
Austin, Minnesota 55912
507-437-4563
www.AustinMN.com

NORTHEAST AUSTIN

Austin Public Library, 323 4th Ave NE:

1 **Once Upon A Time** – a charming depiction of a young girl reading to her brother. Commissioned in 1999 in memory of Walter Wienke, library patron and donor, by sculptor Dennis Smith. The statues are mounted on boulders from the local area and surrounded by wild grasses and flowers to recall the prairie surrounding Wienke's home.



Austin Law Enforcement Center, 201 1st St NE (near the entrance):

2 **The Protector** – an emotion-filled representation of our law enforcement servants in action. Dedicated in May 2000, artist Roger Brodin.



Courthouse Square/Government Center, corner of Main St and 2nd Ave NE:

3 **George Washington** – bronze statue dedicated to the children of Austin on September 1937 as a gift from Judge and Mrs. Henry Weber; by artist-sculptor John K. Daniel. Part of the inscription states, "Only Wisdom Can Bring About Universal Peace to All Mankind."



4 **Mower County Veterans Memorial** – dedicated Nov 1992 to honor those who died in service from the Civil War to the present; by artists Jeff Anderson (local) and Tom Hunt. The Mower County Veterans Association added the eagle sculpture, also by Jeff Anderson, in 2011. Over 1600 pavers have been placed around the sculpture, with flags flying over the memorial to honor and represent all 6 branches of service, as well as a POW/MIA flag.



East Side of Austin LEC, 1st St NE:

5 **The Eagles Ten Commandments Monument** – presented by the Fraternal Order of the Eagles, Austin Aerie 703 to the City of Austin and Mower County on June 18, 1960, as part of a youth guidance program, one of ten such monuments in the state of Minnesota.



Justice Center, 1st St NE and 2nd Ave NE:

6 **Hands of Humanity, Hands of Peace** – commissioned by the Austin Zonta Club in celebration of their 50 plus years of service. Designed and crafted by Austin's Jeff Anderson, Anderson Memorials. The dove was created and cast in collaboration with Jeff Barber, Hader, MN. The hands represent service and depict various ideals of the Zonta members – communication, education, forgiveness, compassion, world friendship, equality, and justice. The dove is the universal symbol of peace.



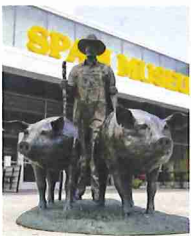
Bandshell Park, 8th Ave NE:

7 **Come Sit With Us** – dedicated in 2007 to the children of Austin. Crafted and donated by Anderson Memorials; Austin Area Zonta members paid for the granite base and engraving.



SPAM® Museum, 101 3rd Ave NE:

8 **Farmer and Pigs** – by artist Mike Capser, a life-sized statue of a farmer driving his pigs to market. This 1000 pound sculpture was created for the SPAM® Museum in 2001, to represent "not only Hormel Foods Corp's roots, but also an artist's appreciation for the family farm" (*Austin Post Bulletin*, August 10, 2001).



The Hormel Institute, 801 16th Ave NE:

9 **Ray of Hope** – designed by Steve Carpenter in Minneapolis, donated by Gary and Pat Ray. The colorful sculpture is a representation of the results of research into the prevention and treatment of cancer by natural compounds.



VFW Post 1216, 2nd St NE and 3rd Ave NE:

10 **Fallen Soldier** – by artist Neil Brodin. Presented to the City of Austin as the culmination of a Boy Scout Eagle project by a 13 year-old, this somber memorial recognizes the sacrifices of our military members. Dedicated in November 2014.



SOUTHEAST AUSTIN

LaFayette Park East, S Main St and 7th Pl SE:

11 Kids Playing – part of a project between Spruce Up Austin and the City of Austin as a result of the Lydia Lien bequest to Austin Park and Recreation for city beautification and art projects. The sculpture is by Anderson Memorials, which generously covered much of the construction and installation costs, and the landscaping is maintained by the Windom 4-H Club.



12 Girl on a Swing – added to this area by the Park Board from Lydia Lien's bequest of funds to be used to beautify park; plantings were donated in memory of Alice Snater by her family. The statue was designed by Anderson Memorials.



Ellis Middle School, 1700 4th Ave SE (inside):

13 The Burning Bush – created by artist John Rood in 1958 to honor the family who sold the school's land to Austin Public Schools. The sculpture symbolizes education as the flame never extinguished. The statue was restored, relocated inside Ellis, and rededicated in 2012.



15 Red Cedar Chapter, Daughters of the American Revolution Memorial Stone – bronze tablet mounted on a boulder listing the 64 Mower County soldiers who lost their lives in WWI, originally erected in 1922. Moved to the Mower County Historical Society grounds and rededicated in October 2015, after having been located at Todd Park, Courthouse Square, near the Municipal Swimming Pool, and then near the flagpole at the pool.

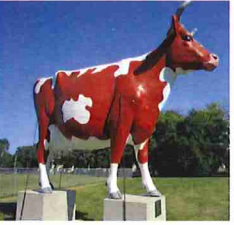


16 Vermont Granite Fountain – once an early landmark that stood at the head of Main Street in Austin to quench the thirst of horses, birds, and dogs. The fountain came to Austin as part of a bequest from a Vermont man who had these fountains erected in cities of a particular size; although not meeting the requirements at the time, the trustees made an exception for Austin and the fountain was erected in 1900. The VFW later had it moved to Horace Austin State Park, and now it is at the Mower County Historical Society.



Mower County Fairgrounds, 700 12th St SW:

17 Buffy the Cow – a 20 foot long, 15 foot tall fiberglass Guernsey cow which stood as a landmark over a family-owned business since 1965 before being moved to its current location in 2011. A "name the cow" contest in 1966 elicited over 5000 entries, from which Buffy was selected.



NORTHWEST AUSTIN

Mayo Clinic Health System – Austin, 1000 1st Dr NW:

18 Me Too – by artist Natalie Krol, a touching sculpture reminding the viewer of the importance of family and togetherness.



Worlein Park, 1st Ave and 1st Dr NW:

19 Nature and Family – a delightful representation of a young family—dog included—enjoying a day out among nature. Laid out over several landscaped levels. Property and statues were donated to the city by the Worlein family, and it was dedicated officially on July 2, 1999. The artist is Michael Capser.



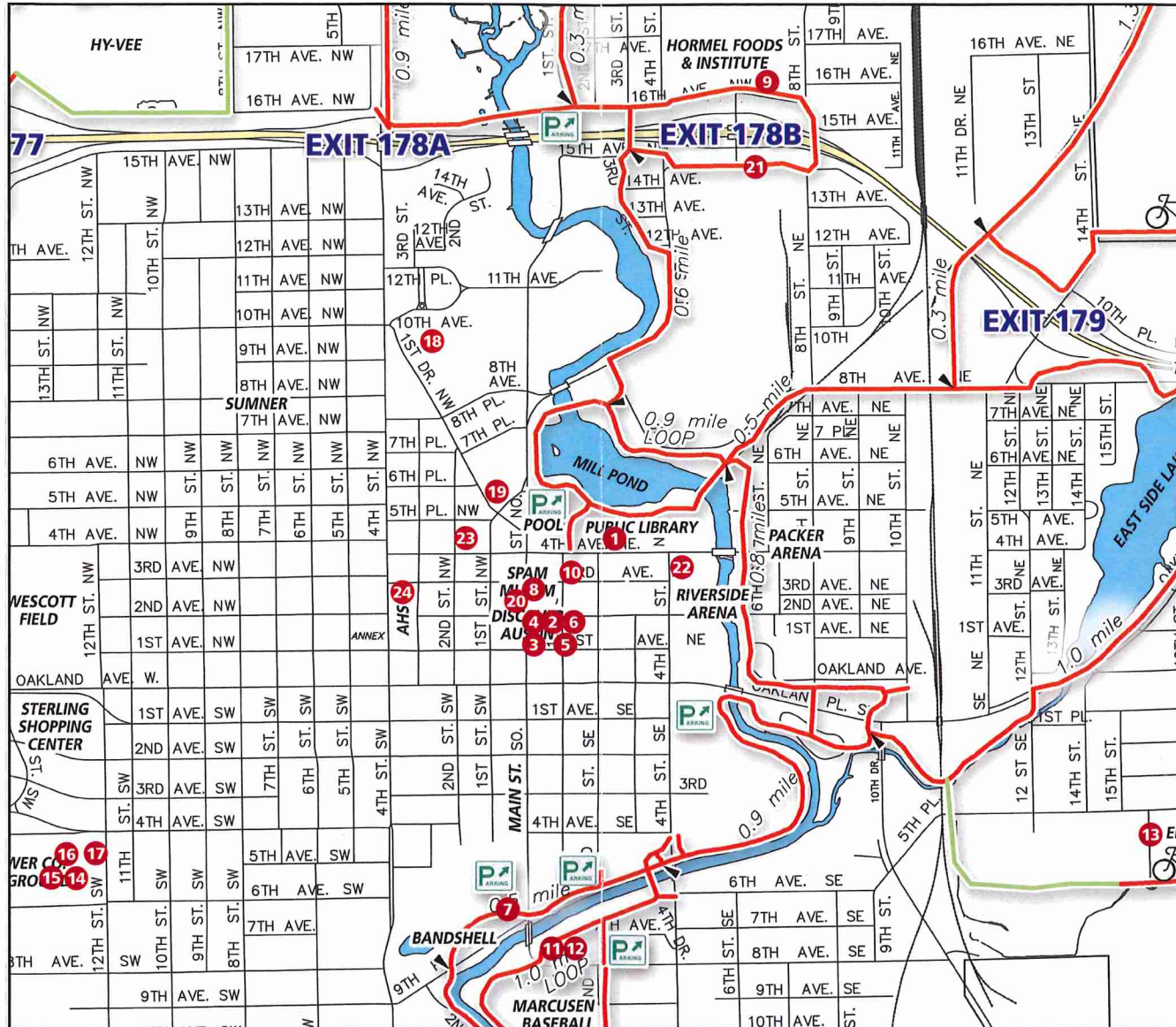
PIGS IN THE CITY

The result of an Austin Area Chamber of Commerce contest held in 2000 raising funds for charity. About 40 cement pig statues from Steven's Concrete Gallery were decorated and displayed around town.



Remaining pigs include:

- 20 Piggy Blues** – 323 North Main Street
 - 21 Hormel Plant** – 500 14th Ave NE
 - 22 Austin City Hall** – 500 4th Ave NE (inside)
 - 23 Hormel Historic Home** – 208 4th Ave NW
 - 24 Austin High School** – 2301 3rd St NW
- Many located at private residences*



SOUTHWEST AUSTIN

Mower County Historical Society, 1303 6th Ave SW:

14 M4 Sherman Tank – this 32-ton WWII veteran came from Rock Island Arsenal, Rock Island, IL in June/July 1958 through the efforts of Congressman Ed Thye, as a centennial monument to war veterans. The move was funded in part by a "tank club" for 25 cents for children and 50 cents for adults.

